

2+1 toilet



Single shower

STEEL CABIN RANGE FOR HIRE AND SALE

Toilets and showers

A range of different configurations are available from our steel cabin range to provide portable toilets and shower facilities to suit site and welfare requirements, for hire or sale.

All toilets incorporate both male and female facilities, urinals and sinks with hot and cold water and conform to current Health & Safety requirements, including ventilation, lighting and maintenance.

For sites with limited space there are single and double toilet units with a compact design to take up a small footprint. For larger sites we offer a range of configurations: 2+1, 3+1, 4+1, 5+1 and 6+1.

Showers are available in single units with an aluminium chequered plate (Durbar) easy-to-clean floor. Three connections are provided for electricity, water and waste.

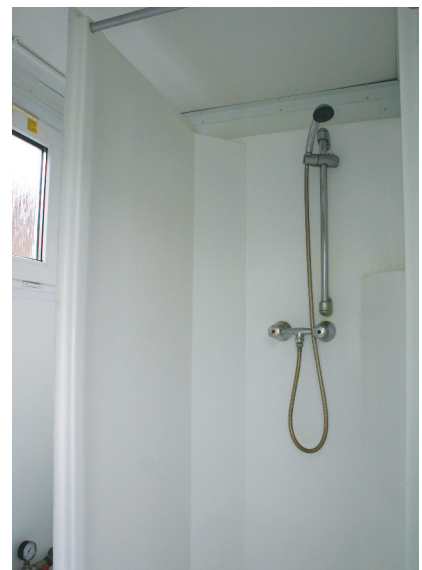
For larger sites, we have a limited stock of multiple shower units. Please ask for details.



Ladies single toilet cubicle



Handwash area



Shower cubicle



Seven bay shower unit



Single toilet, waste tank and water bowser



2+1 with steel waste tank



Water bowser (1100 litres)

Toilets for sites with limited services

Toilets can sit above a septic tank or mains sewer or a waste tank which is an ideal option for sites with no access to mains waste facilities. Waste tanks come with a site gauge to assess how full the tank is and Portable Space offers a service to empty these tanks on request.

In situations where there is no mains water, we can provide a water bowser and on-demand pump for flushing toilets and washing hands.

Waste tanks are available to fit all sizes of toilets (2+1, 3+1, 4+1, 5+1 and 6+1), as well as single and double showers.

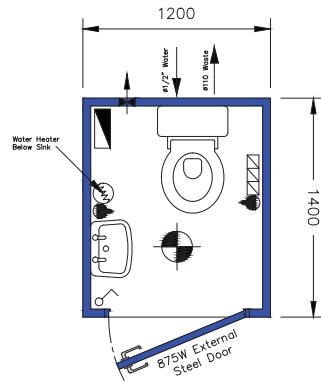
Chemical toilets

For short-term sites or those with limited water and waste connections, as an alternative to our mains-connected toilets, we can offer single chemical toilets which are serviced weekly.



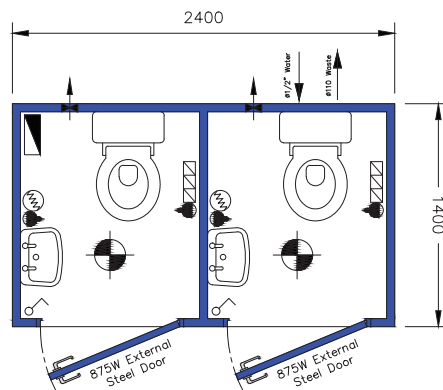
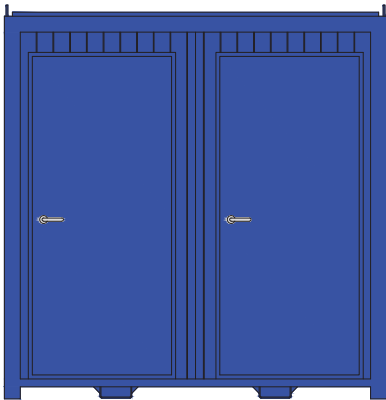
Single chemical toilet

STEEL SINGLE TOILET UNITS Single 5' x 4' steel toilet

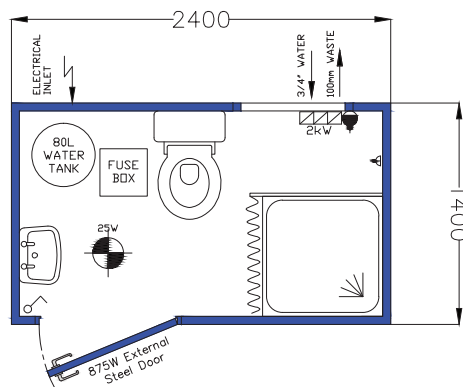
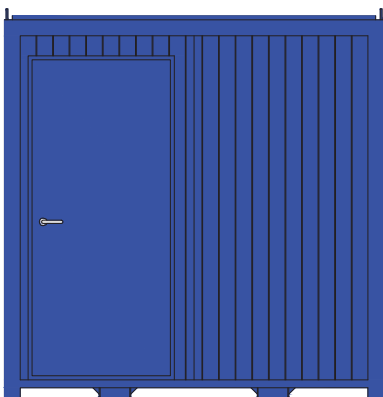


- DISTRIBUTION BOARD
- CONVECTOR HEATER
- TUBULAR HEATER
- HIGH LEVEL FAN HEATER
- FLUORESCENT LIGHT
- BULKHEAD LIGHT
- WATER HEATER
- 13A TWIN SOCKET - LOW
- 13A TWIN SOCKET - HIGH
- WALL LIGHT SWITCH
- PULL LIGHT SWITCH
- THERMOSTAT
- EXTRACTION FAN
- COOKER POINT
- SHOWER HEATER
- COAT HOOKS
- SLIDING WINDOW
- COMPLETE WITH SHUTTER
- HL HIGH LEVEL
- TOV TOP OPENING VENT
- WT WORKTOP
- ML MORTICE LOCK
- BL BATHROOM LOCK
- DL5 5 LEVER DEADLOCK
- RL ROLLER LATCH
- BB BARREL BOLTS
- FROST STAT
- VENT

STEEL DOUBLE TOILET UNITS Twin 8' x 5' steel toilets



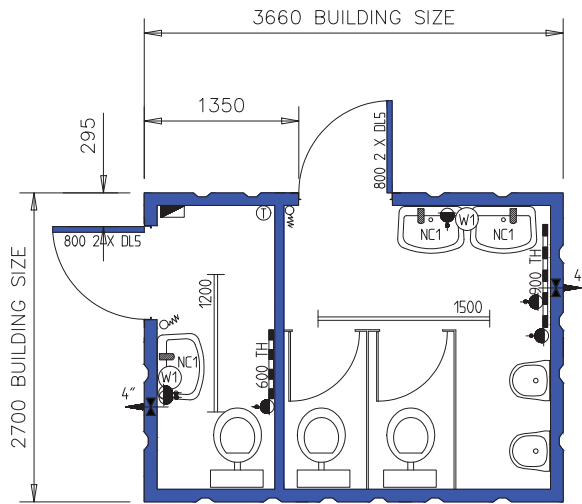
STEEL SINGLE SHOWER UNIT 8' x 5' steel shower



STEEL TOILET UNITS CAD drawing examples below show 12' x 9' Toilet (2+1), 20' x 9' Toilet (4+1) and 32' x 10' Toilet (6+1)

TOILET/SHOWER UNIT SIZE KEY

- 12' x 9' (2+1)
- 16' x 9' (3+1)
- 20' x 9' (4+1)
- 24' x 9' (5+1)
- 32' x 10' (6+1)



- DISTRIBUTION BOARD
- CONVECTOR HEATER
- TUBULAR HEATER
- HIGH LEVEL FAN HEATER
- RED BULKHEAD 16W PLS
- FLUORESCENT LIGHT
- BULKHEAD LIGHT
- WATER HEATER
- 13A TWIN SOCKET - LOW
- 13A TWIN SOCKET - HIGH
- SWITCH SPUR
- WALL LIGHT SWITCH
- PULL LIGHT SWITCH
- THERMOSTAT
- EXTRACTION FAN
- SHOWER HEATER
- FROST STAT
- VENT
- E.S 12mm EARTHING STUD

