

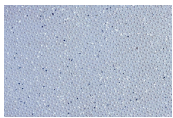
12FT X 9FT 2+1 JACKLEG TOILET

Quickfind Code: 596

Part Number: SALE 2+1 TOILET TIMBER

£11,985.00 (exc. VAT)

£14,382.00 (inc. VAT)



PRODUCT DETAILS

This jackleg toilet is available for sale and delivery UK-wide.

The 2+1 jackleg toilet provides two male cubicles together with urinals and a single female toilet accessed from a separate external door. Built from the jackleg range the unit simply needs connection to electricity, water and waste. Therefore it is ideal for the provision of toilet facilities for short and medium term projects.

The benefit of a portable toilet over conventional build is that the unit can be easily moved, sold or replaced with larger facilities as your business grows and changes. Some sites need different proportions of female to male facilities. We also build bespoke units and can incorporate other facilities such as showers if required.

TYPICAL USES

- Factories
- Construction projects
- Transport businesses
- Sports clubs and schools

BENEFITS

- Low maintenance Plastisol clad finish
- Easily moved if your plans change
- Choice of cladding colours

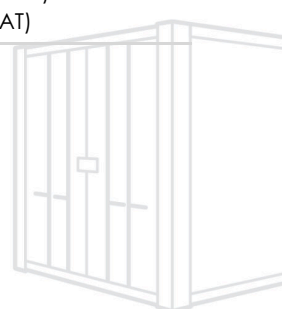
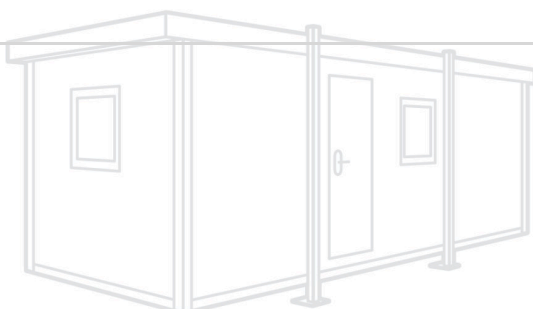
PRODUCT OPTIONS:

The following optional items can be added to this product:

Electrical Socket Fitted (32 Amp)

£78.00 (exc. VAT)

£93.60 (inc. VAT)



PRODUCT SPECIFICATIONS

| | |
|------------------------------------|--------------------------|
| External Length (m) | 3.66 |
| External Width excluding Jacks (m) | 2.74 |
| External Width including Jacks (m) | 2.87 |
| External Height (m) | 2.75 |
| Internal Length (m) | 3.46 |
| Internal Width (m) | 2.45 |
| Internal Height (m) | 2.23 |
| Door Width (m) | 0.81 |
| Door Height (m) | 2.07 |
| Weight (kg) | 1820 |
| Floor Type | 18mm Particle Board |
| Internal Floor Covering | 2mm Vinyl |
| Internal Wall Covering | Vinyl Faced Plasterboard |
| Electrical Requirements (Amps) | 32amp |