

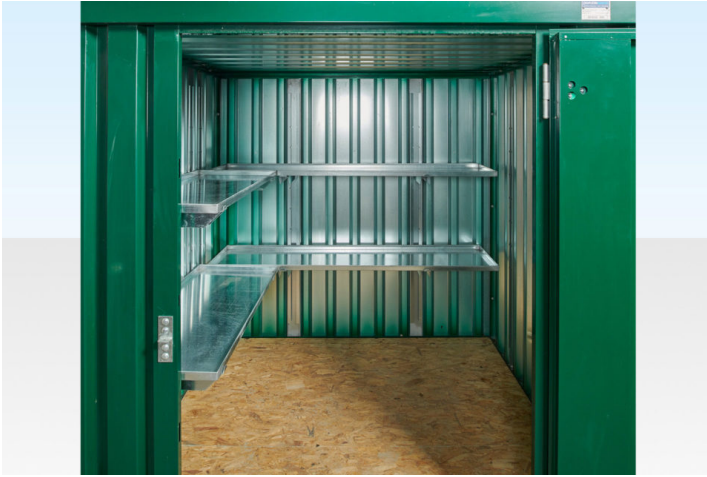
2M FLAT PACK CONTAINER SHELVING BUNDLE – ONE SIDE & REAR (TWO TIER)

Quickfind Code: 1277

Part Number: 2M FLATPACK SHELVING 1 SIDE &
REAR 2 TIER

£380.00 (exc. VAT)

£456.00 (inc. VAT)



PRODUCT DETAILS

Shelving bundle for [2m flat pack container galvanised](#) or [2m flat pack container powder coated](#) providing two-tier shelving on both sides and the rear of the container.

Flat Pack shelving bundle contents:

1 x 1850mm Two-Tier Shelf Set for the rear of the container

- 2 x [1850mm Steel Shelves](#) (QF1071)
- 3 x [Shelf Uprights](#) (QF580)
- 6 x [Shelf Arms](#) (QF579)

1 x 1370mm Two-Tier Shelf Set for one side of the container

- 2 x [1370mm Steel Shelves](#) (QF1070)
- 3 x [Shelf Uprights](#) (QF580)
- 6 x [Shelf Arms](#) (QF579)

The shelves are 45cm wide and incorporate a 25mm steel lip to provide strength, prevent items slipping off and to catch any minor spillages when storing liquids.

The shorter 1370mm shelf sets have a 30kg load capacity and the longer 1850mm shelf packs have a 45kg load capacity. Additional shelf uprights and arms can be purchased to increase the load capacity to a maximum of 60kg per shelf. Contact us to discuss your requirements.

PRODUCT SPECIFICATIONS

