

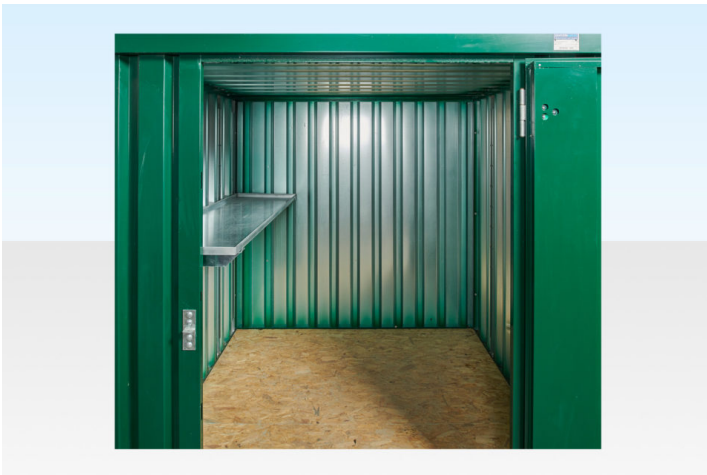
## 2M FLAT PACK CONTAINER SHELVING BUNDLE – SINGLE SIDE (SINGLE TIER)

Quickfind Code: 1250

Part Number: SALE 2M FLATPACK SHELVING S SIDE  
1 TIER

**£192.00** (exc. VAT)

**£230.40** (inc. VAT)



### PRODUCT DETAILS

Shelving bundle for [2m flat pack container galvanised](#) or [2m flat pack container powder coated](#) providing single-tier shelving on one side of the container.

Flat Pack shelving bundle contents:

#### 1 x 1850mm Single Tier Shelf Set

- 1 x [1850mm Steel Shelf](#) (QF1071)
- 3 x [Shelf Uprights](#) (QF580)
- 3 x [Shelf Arms](#) (QF579)

Each shelf set contains the required shelf uprights, arms and drip shelves.

The shelves are 45cm wide and incorporate a 25mm steel lip to provide strength, prevent items slipping off and to catch any minor spillages when storing liquids.

The 1850mm shelf packs have a 45kg load capacity. Additional shelf uprights and arms can be purchased to increase the load capacity to a maximum of 60kg per shelf. Contact us to discuss your requirements.

### PRODUCT SPECIFICATIONS

