

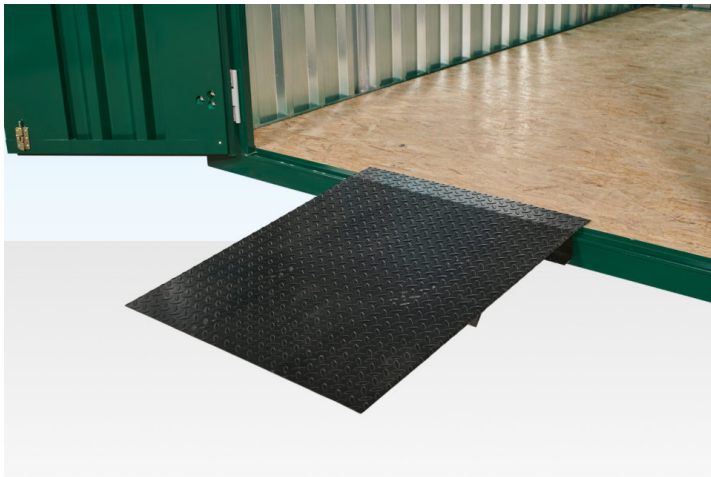
## RAMP FOR FLAT PACK STORE

Quickfind Code: 578

Part Number: SALE RAMP FOR FLATPACK STORE

**£185.00** (exc. VAT)

**£222.00** (inc. VAT)



### PRODUCT DETAILS

Painted steel Durbar (chequer plate) ramp used when you need to push wheeled equipment into the flat pack store.

The ramp incorporates an angle that allows the ramp to sit level on the bottom door sill.

The ramp is lightweight and needs to be removed to open and close the door.

### PRODUCT SPECIFICATIONS

